

**purple**  
**mash**

# **2BeSafe**

## **Teacher Guide**

## Contents

What is 2BeSafe?.....	3
Theme Coverage .....	4
Delivering 2BeSafe.....	5
When to deliver 2BeSafe.....	7
Formative assessment for 2BeSafe.....	7

Need more support? Contact us:

Tel: +44(0)208 203 1781 | Email: [support@2simple.com](mailto:support@2simple.com) | Twitter: [@2simplesoftware](https://twitter.com/2simplesoftware)



# What is 2BeSafe?

**2BeSafe** is an online safety scheme of work, published by 2Simple, to meet the guidance set out within the Department for Education's - [Education for a Connected World](#).

The Education for a Connected World framework outlines eight key areas which seek to equip children and young people for digital life and the digital world. 2Simple's **2BeSafe** offers a comprehensive coverage of these requirements for primary schools starting from Reception up to Year 6.

For each objective, we have produced a 15-to-20-minute session containing activities to promote discussion, greater thinking and deeper reflection in order to raise the profile of the importance of staying safe online. All sessions contain a teaching PowerPoint and easily accessible resources in order to save teachers' time.

Need more support? Contact us:

Tel: +44(0)208 203 1781 | Email: [support@2simple.com](mailto:support@2simple.com) | Twitter: [@2simplesoftware](#)



# Theme Coverage

The table below outlines the coverage of 2BeSafe from reception to Year 6.

Theme	Year Group and Number of Sessions						
	Year R	Year 1	Year 2	Year 3	Year 4	Year 5	Year 6
Self-Image and Identity	1	2	2	3	3	2	3
Online Relationships	2	4	7	6	3	5	4
Online Reputation	1	2	3	3	2	2	2
Online Bullying	2	1	3	2	3	6	2
Health, Wellbeing and Lifestyle	1	1	1	2	2	4	4
Privacy and Security	2	3	4	3	4	3	6
Managing Online Information	2	3	5	6	6	9	11
Copyright and Ownership	2	4	2	1	2	2	2
<b>Total amount of sessions</b>	<b>13</b>	<b>20</b>	<b>27</b>	<b>26</b>	<b>25</b>	<b>33</b>	<b>34</b>

Need more support? Contact us:

Tel: +44(0)208 203 1781 | Email: [support@2simple.com](mailto:support@2simple.com) | Twitter: @2simplesoftware



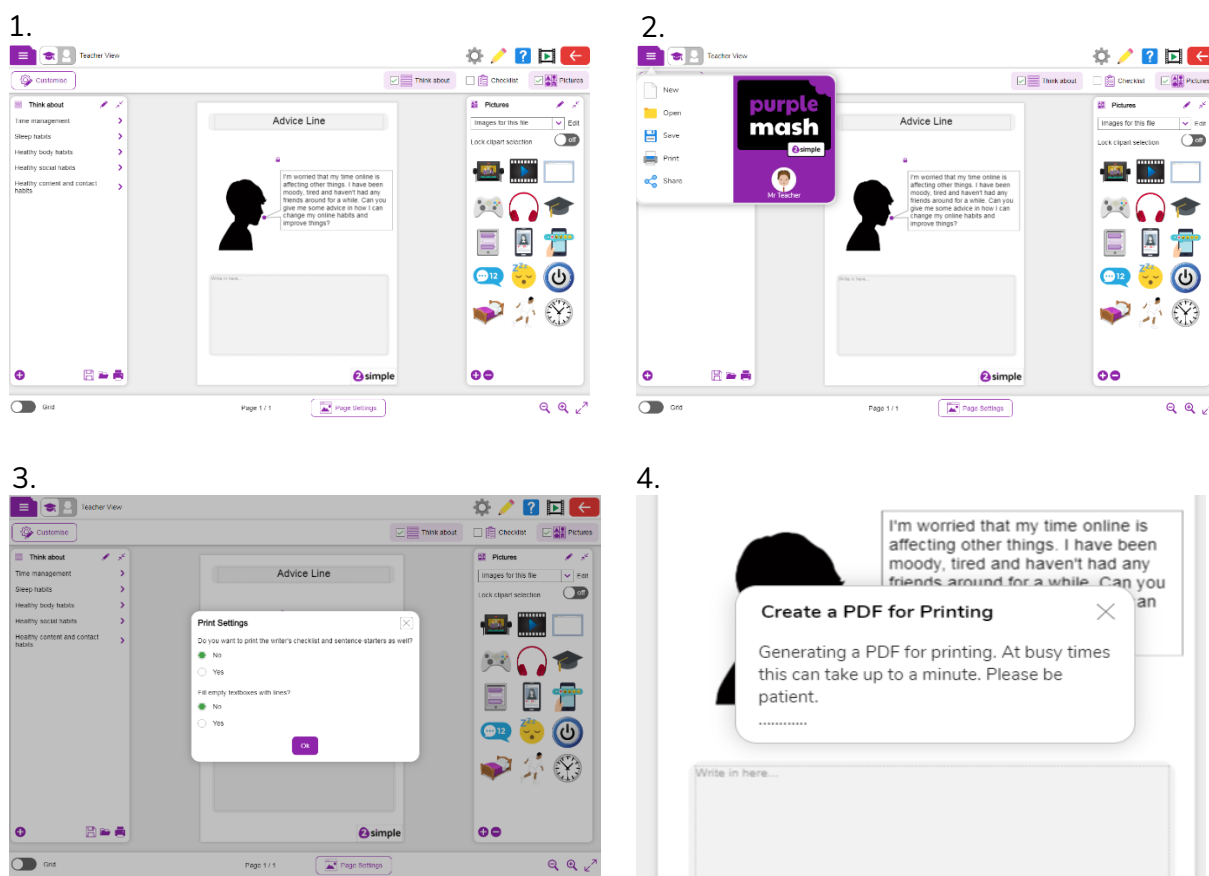
# Delivering 2BeSafe

**2BeSafe** by 2Simple has been designed carefully to ensure that all areas of the Education for a Connected World Framework can be addressed, being taught both in depth and in a timely manner.

Each 15 to 20-minute session within the **2BeSafe** framework has been written to ensure that content can be delivered on a **whole class basis** with an accompanying group, paired or independent activity to further consolidate learning. At times, these activities vary from a whole class quiz, a discussion-based task or an independent writing activity.

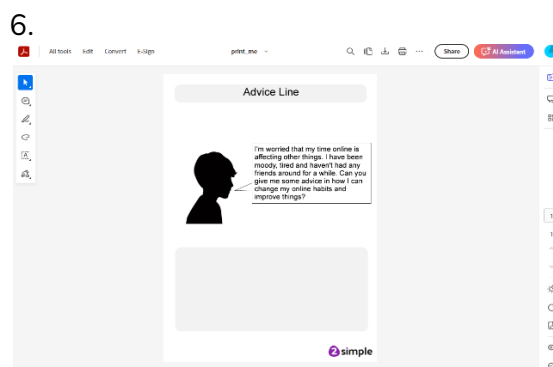
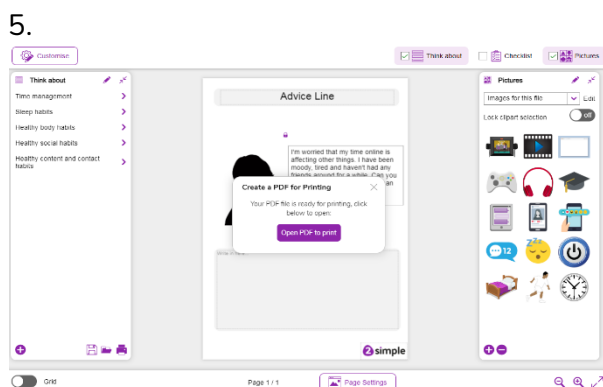
Although teachers may choose to teach some of the **2BeSafe** sessions as part of their allocated computing time, we know that teachers and students may not always be able to access multiple devices (computers or tablets) at one time. Teachers and leaders may wish to print physical copies of any accompanying activities to hand out to their classes when they are unable to access online devices.

Please see the example below for instructions on how to **turn online activities into printable PDF's**:

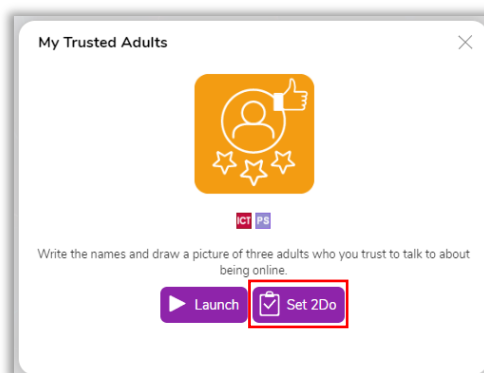
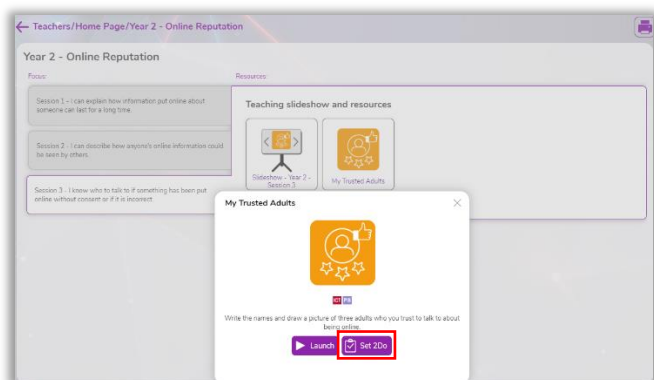


Need more support? Contact us:

Tel: +44(0)208 203 1781 | Email: support@2simple.com | Twitter: @2simplesoftware



If you wish for children to access the resources on their own independent devices, teachers will need to set the appropriate activity as a '2Do'. This will then push the activity to the children's Purple Mash account where they are able to complete and submit the relevant work. For additional information regarding the setting of 2Do's, please follow the 2Do's [user guide](#).



Need more support? Contact us:

Tel: +44(0)208 203 1781 | Email: [support@2simple.com](mailto:support@2simple.com) | Twitter: [@2simplesoftware](https://twitter.com/2simplesoftware)

## When to deliver 2BeSafe

With online safety and its relevant themes acting as a 'golden thread' throughout the curriculum, we believe that **2BeSafe** sessions should not be limited to being taught solely within a class's computing lessons. Online safety should form a fundamental part of a school's child protection and safeguarding measures and we encourage teachers to think of other appropriate times during the school day where these sessions could be delivered.

## Formative assessment for 2BeSafe

Each session within 2BeSafe includes opportunities for formative assessment. As well as thought provoking questions that promote critical thinking and discussion. A reflection slide is included for children to self-reflect on the learning and activities that they have completed. Teachers may wish to use this information to inform their next steps in regards to using 2BeSafe.

Need more support? Contact us:

Tel: +44(0)208 203 1781 | Email: [support@2simple.com](mailto:support@2simple.com) | Twitter: [@2simplesoftware](https://twitter.com/2simplesoftware)

